

THIS DRAWING IS UNPUBLISHED. RELEASED FOR PUBLICATION  
 © COPYRIGHT 19 BY AMP INCORPORATED, HARRISBURG, PA. ALL INTERNATIONAL RIGHTS RESERVED. AMP PRODUCTS MAY BE COVERED BY U.S. AND FOREIGN PATENTS AND/OR PATENTS PENDING.

REVISIONS					
P	F	ZONE	DESCRIPTION	DATE	APPROVED
✓		0	RELEASED	7-25-85	YMPH JB

D

C

B

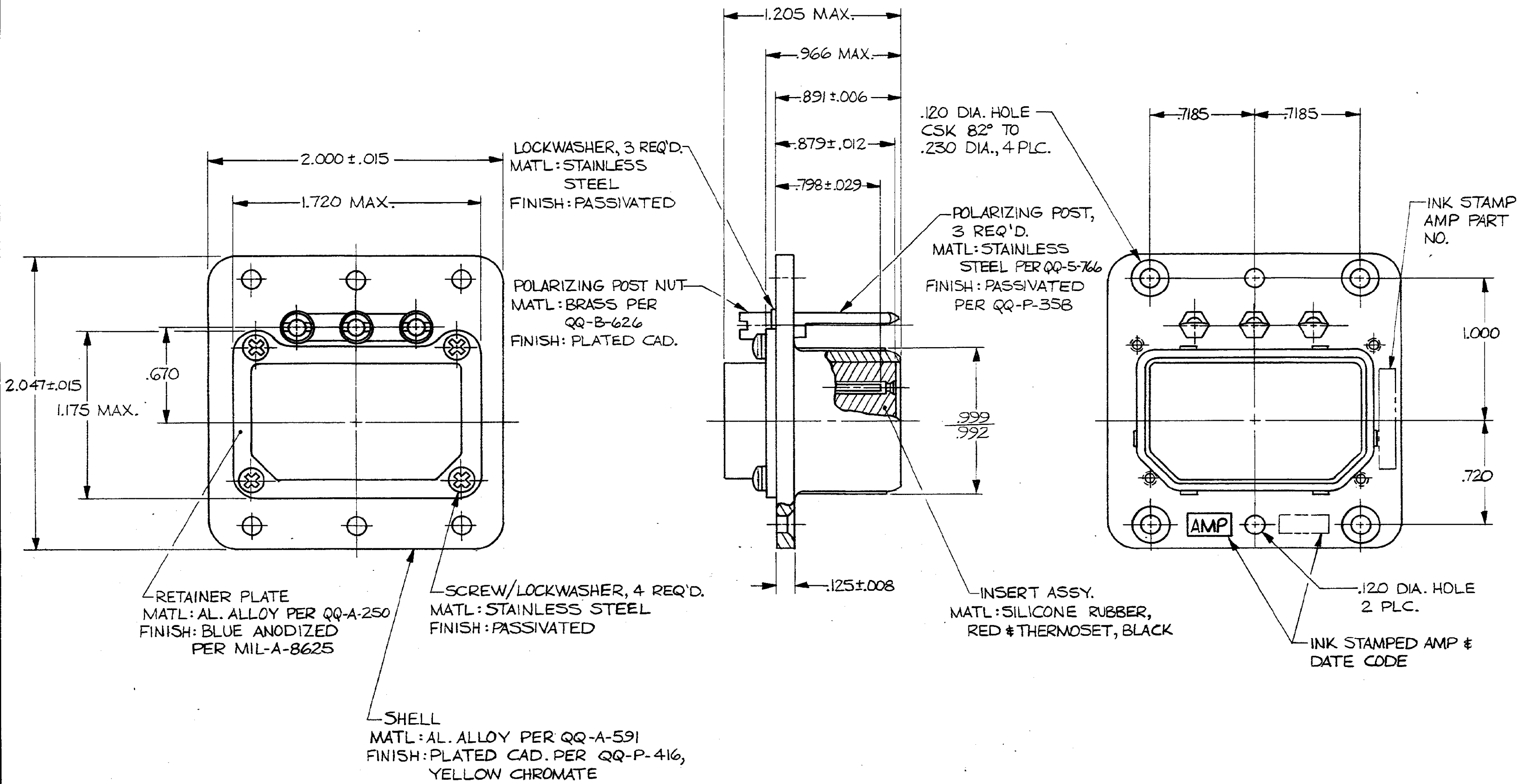
A

D

C

B

A



- KEYS ARE SHOWN IN POSITION 01 FOR ILLUSTRATION ONLY.
- CONTACTS ARE SHOWN IN POSITION FOR ILLUSTRATION ONLY.
- CONNECTOR MEETS AMP PRODUCT SPEC. 108-10019.

UNLESS OTHERWISE SPECIFIED DIMENSIONS ARE IN INCHES. TOLERANCES ON: DECIMALS ± .005 ANGLES ± _____ MATERIAL SEE CALLOUTS FINISH SEE CALLOUTS	CONTRACT NO.	AS SHOWN	213077-1
	DR <i>Mark P. Hoffbauer</i> 7-25-85	DESCRIPTION	PART NO
	CHK <i>A. Boullianne</i> 7-31-85	NAME	AMP   AMP INCORPORATED Harrisburg, Pa. 17105
	APPD <i>A. Boullianne</i> 7-31-85	CONNECTOR ASSEMBLY, ARINC, SINGLE INSERT	
	APPD <i>A. Boullianne</i> 7-31-85	SIZE	FSCM NO
	DSGN APPD	C	00779
	OTHER APPD	DRAWING NO	213077
		SCALE	NTS
		SHEET	

CUSTOMER DRAWING

213077