

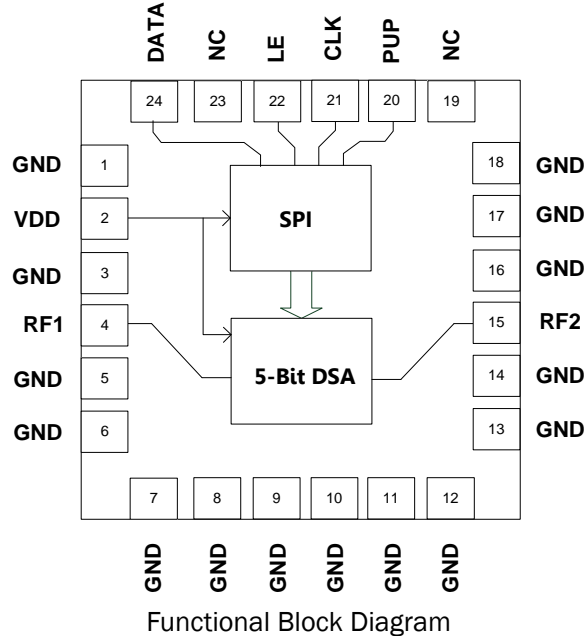


Features

- Frequency Range 50MHz to 4000MHz
- 5-Bits, 31dB Range, 1dB Step
- High Linearity, IIP3 >48dBm
- 3V and 5V Logic Compatible
- Serial-to-Parallel Controller
- Serial Programming Interface
- Power-up Programming Modes
- On-chip ESD Protection Class 1C HBM
- Single Supply, 3V to 5V Operation
- Footprint Compatible with Most 24-Pin, 4mm x 4mm, QFNs

Applications

- Transceiver RF and IF Applications
- Cellular, PCS, GSM, UMTS, LTE, WiMax/WiFi
- Wireless Data, Satellite Terminals
- Test Equipment



Product Description

RFMD's RFSA2524 is a 5-bit digital step attenuator (DSA) that features high linearity over the entire 31dB gain control range with excellent step accuracy in 1dB steps. The RFSA2524 is programmed via a serial mode control interface that is both 3V and 5V compatible. The RFSA2524 also offers a rugged Class 1C HBM ESD rating via on-chip ESD circuitry. The MCM package is footprint compatible with most 24-pin, 4mm x 4mm, QFN packages.

Ordering Information

| | |
|-----------------|---|
| RFSA2524SR | 7" reel with 100 pieces |
| RFSA2524SQ | Sample bag with 25 pieces |
| RFSA2524TR7 | 7" reel with 750 pieces |
| RFSA2524TR13 | 13" reel with 2500 pieces |
| RFSA2524PCK-410 | 50MHz to 4000MHz PCBA with 5-piece sample bag |

Optimum Technology Matching® Applied

- | | | | |
|--------------------------------------|--------------------------------------|--|------------------------------------|
| <input type="checkbox"/> GaAs HBT | <input type="checkbox"/> SiGe BiCMOS | <input checked="" type="checkbox"/> GaAs pHEMT | <input type="checkbox"/> GaN HEMT |
| <input type="checkbox"/> GaAs MESFET | <input type="checkbox"/> Si BiCMOS | <input checked="" type="checkbox"/> Si CMOS | <input type="checkbox"/> BiFET HBT |
| <input type="checkbox"/> InGaP HBT | <input type="checkbox"/> SiGe HBT | <input type="checkbox"/> Si BJT | |

RF MICRO DEVICES®, RFMD®, Optimum Technology Matching®, Enabling Wireless Connectivity™, PowerStar®, POLARIS™ TOTAL RADIO™ and UltimateBlue™ are trademarks of RFMD, LLC. BLUETOOTH is a trademark owned by Bluetooth SIG, Inc., U.S.A. and licensed for use by RFMD. All other trade names, trademarks and registered trademarks are the property of their respective owners. ©2012, RF Micro Devices, Inc.

Absolute Maximum Ratings

| Parameter | Rating | Unit |
|--|-------------|------|
| Supply Voltage | +5.5 | V |
| DC Supply Current | 15 | mA |
| Power Dissipation | 83 | mW |
| Max RF Input Power | 28.3 | dBm |
| Operating Temperature (T _{CASE}) | -40 to +85 | °C |
| Storage Temperature | -40 to +150 | °C |
| Junction Temperature | 150 | °C |
| ESD Rating (HBM) | Class 1C | |
| Moisture Sensitivity Level | MSL3 | |



Caution! ESD sensitive device.

Exceeding any one or a combination of the Absolute Maximum Rating conditions may cause permanent damage to the device. Extended application of Absolute Maximum Rating conditions to the device may reduce device reliability. Specified typical performance or functional operation of the device under Absolute Maximum Rating conditions is not implied.

The information in this publication is believed to be accurate and reliable. However, no responsibility is assumed by RF Micro Devices, Inc. ("RFMD") for its use, nor for any infringement of patents, or other rights of third parties, resulting from its use. No license is granted by implication or otherwise under any patent or patent rights of RFMD. RFMD reserves the right to change component circuitry, recommended application circuitry and specifications at any time without prior notice.



RFMD Green: RoHS compliant per EU Directive 2002/95/EC, halogen free per IEC 61249-2-21, < 1000ppm each of antimony trioxide in polymeric materials and red phosphorus as a flame retardant, and <2% antimony in solder.

| Parameter | Specification | | | Unit | Condition |
|-------------------------------------|--|------|------|------|--|
| | Min. | Typ. | Max. | | |
| Frequency Range | 50 | | 4000 | MHz | |
| Insertion Loss | | 0.68 | | dB | 50MHz, 0dB attenuation |
| | | 0.79 | | dB | 500MHz, 0dB attenuation |
| | | 0.89 | | dB | 850MHz, 0dB attenuation |
| | | 1.26 | | dB | 2100MHz, 0dB attenuation |
| | | 1.42 | | dB | 2700MHz, 0dB attenuation |
| | | 2.11 | | dB | 4000MHz, 0dB attenuation |
| Gain Control Range | | 31 | | dB | 1dB step size |
| Step Accuracy | ±(0.1 + 5.0% attenuation setting) | | | dB | |
| Input IP3 | 48 | 50 | | dBm | 50MHz to 3000MHz, Min. 48dBm 8dB Bit |
| Input P0.5dB | | 26 | | dBm | 50MHz to 100MHz, all states |
| | | 28 | | dBm | 150MHz to 2500MHz, all states |
| Input Return Loss | | 29 | | dB | 50MHz to 2700MHz, all states |
| | | 17 | | dB | 2700MHz to 4000MHz, all states |
| Output Return Loss | | 28 | | dB | 50MHz to 2700MHz, all states |
| | | 22 | | dB | 2700MHz to 4000MHz, all states |
| Control Interface | 5-bit, Serial | | | bit | Serial interface |
| Settling Time | | 200 | | ns | t _{RISE} , t _{FALL} (10%/90% RF) |
| Switching Speed | | 200 | | ns | t _{ON} , t _{OFF} (50% CTL to 10%/90% RF) |
| Supply Voltage (V _{DD}) | 4.75 | 5.0 | 5.25 | V | Typical performance based on 5V operation. |
| Supply Current | | 5.5 | | mA | |
| Control Voltage (V _{CTL}) | Low, V _{CTL} = 0V to 0.8V | | | V | |
| | High, V _{CTL} = 2.0V to V _{DD} | | | V | |

Notes:

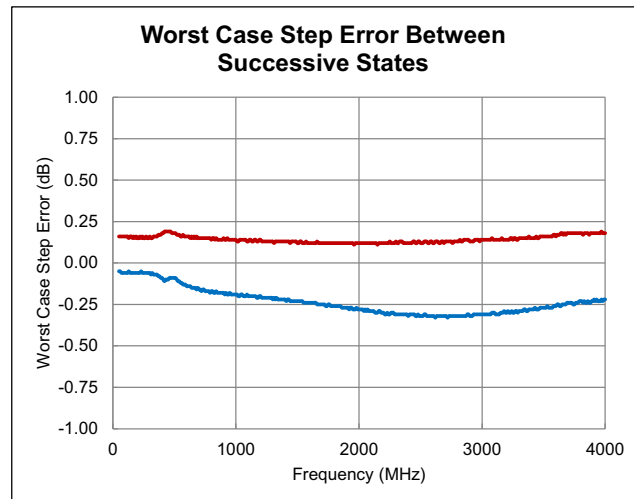
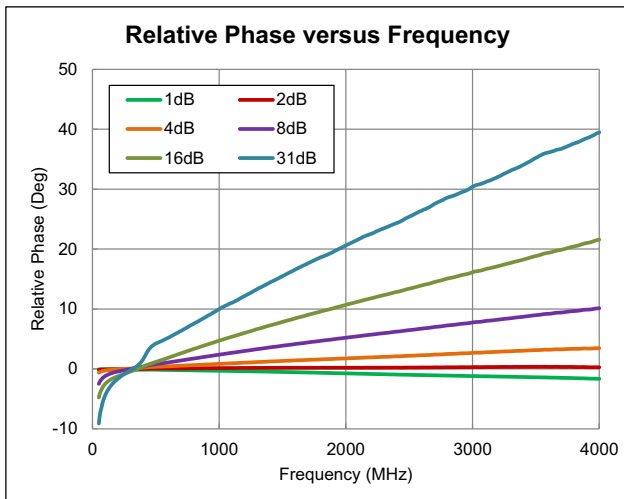
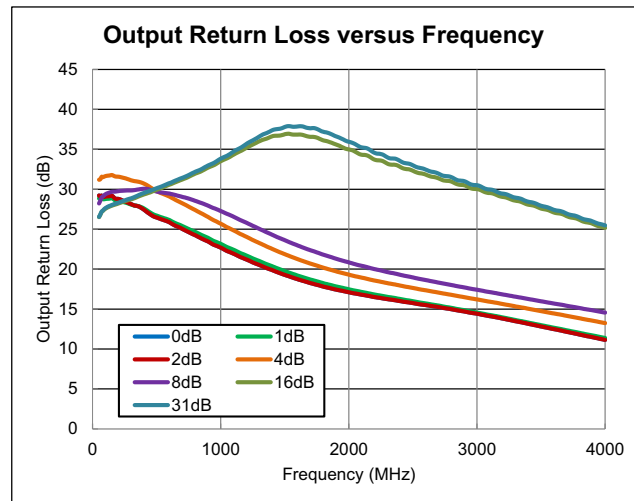
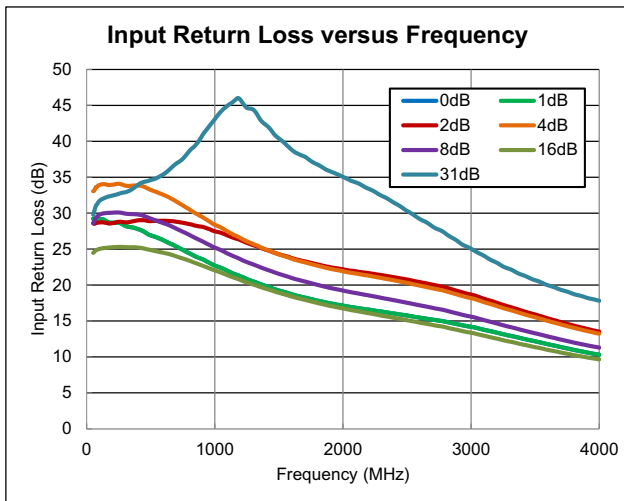
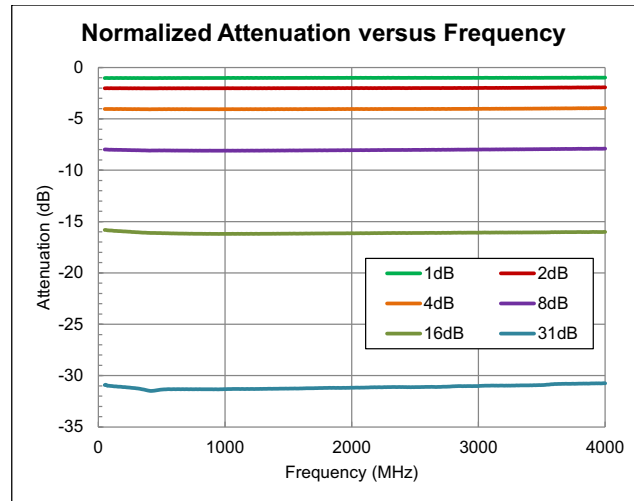
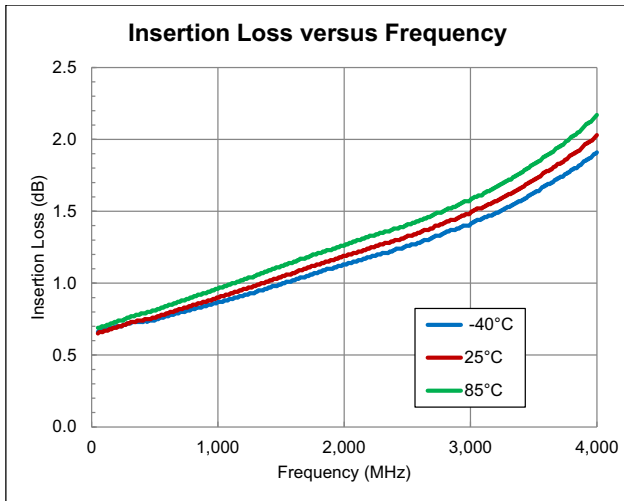
- V_{DD} = 5V, V_{CTL} = 5V, T = 25 °C
- IIP3 measured with P_{IN} = +12dBm/tone, 1MHz spacing

| Parameter | Specification | | | Unit | Condition |
|-------------------------------------|--|---------------|------|------|--|
| | Min. | Typ. | Max. | | |
| Frequency Range | 50 | | 4000 | MHz | |
| Insertion Loss | | 0.75 | | dB | 50MHz, 0dB attenuation |
| | | 0.87 | | dB | 500MHz, 0dB attenuation |
| | | 0.97 | | dB | 850MHz, 0dB attenuation |
| | | 1.35 | | dB | 2100MHz, 0dB attenuation |
| | | 1.52 | | dB | 2700MHz, 0dB attenuation |
| | | 2.23 | | dB | 4000MHz, 0dB attenuation |
| Gain Control Range | | 31 | | dB | 1dB step size |
| Step Accuracy | ±(0.1 + 5.0% attenuation setting) | | | dB | |
| Input IP3 | | 35 | | dBm | 50MHz to 100MHz |
| | 46 | 50 | | dBm | 100MHz to 3000MHz, Min. 46dBm 8dB Bit and 16dB Bit |
| Input P0.5dB | | 19 | | dBm | 50MHz to 100MHz, all states |
| | | 21 | | dBm | 150MHz to 2500MHz, all states |
| Input Return Loss | | 28 | | dB | 50MHz to 2700MHz, all states |
| | | 17 | | dB | 2700MHz to 4000MHz, all states |
| Output Return Loss | | 27 | | dB | 50MHz to 2700MHz, all states |
| | | 22 | | dB | 2700MHz to 4000MHz, all states |
| Control Interface | | 5-bit, Serial | | bit | Serial interface |
| Settling Time | | 200 | | ns | t _{RISE} , t _{FALL} (10%/90% RF) |
| Switching Speed | | 200 | | ns | t _{ON} , t _{OFF} (50% CTL to 10%/90% RF) |
| Supply Voltage (V _{DD}) | 2.8 | 3.0 | 3.3 | V | Typical performance based on 3V operation. |
| Supply Current | | 5.2 | | mA | |
| Control Voltage (V _{CTL}) | Low, V _{CTL} = 0V to 0.8V | | | V | |
| | High, V _{CTL} = 2.0V to V _{DD} | | | V | |

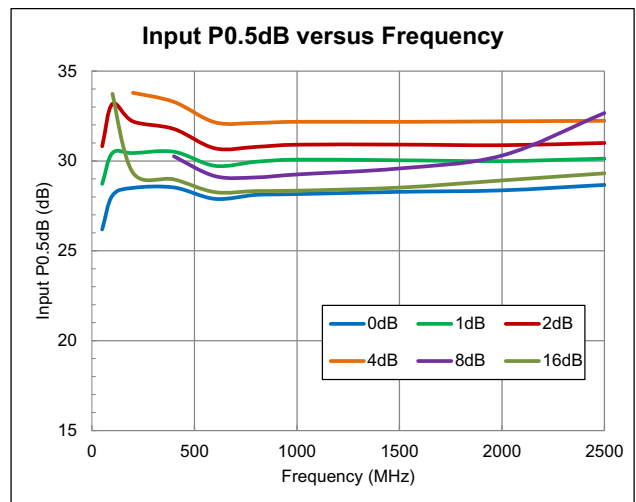
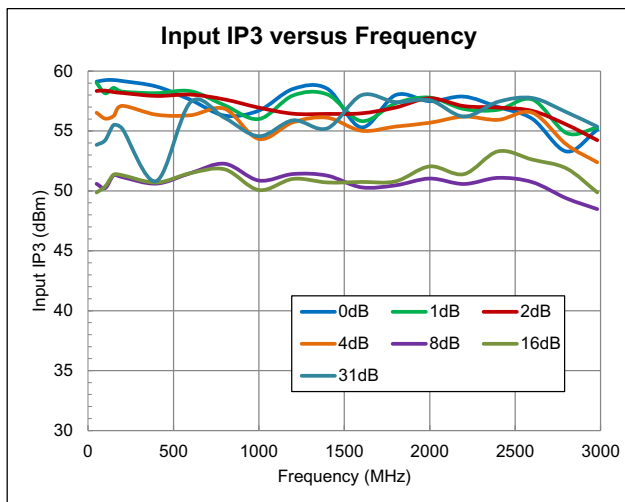
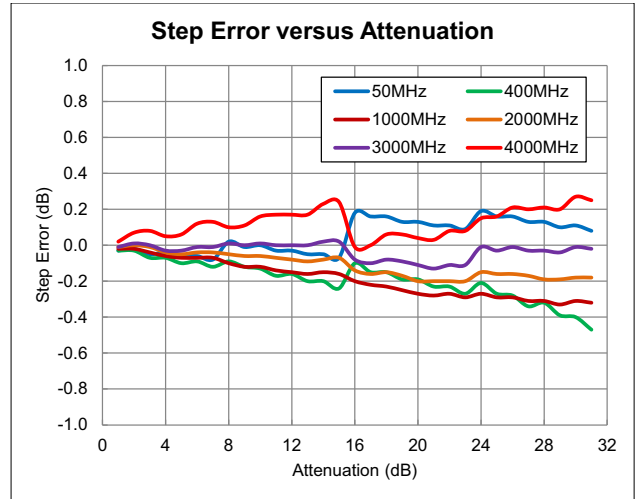
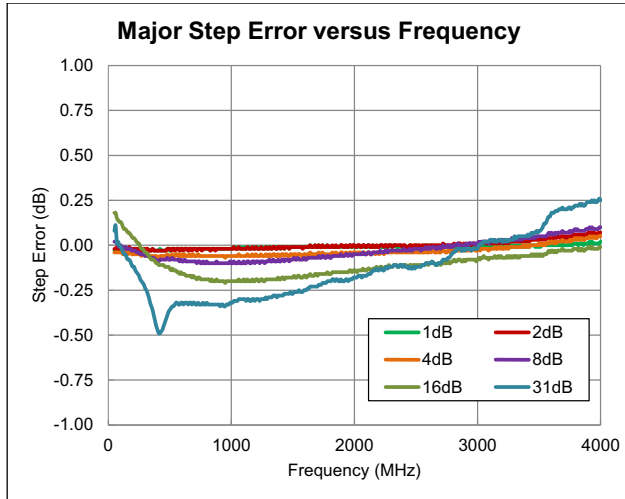
Notes:

- V_{DD} = 3V, V_{CTL} = 3V, T = 25 °C
- IIP3 measured with P_{IN} = +12dBm/tone, 1MHz spacing

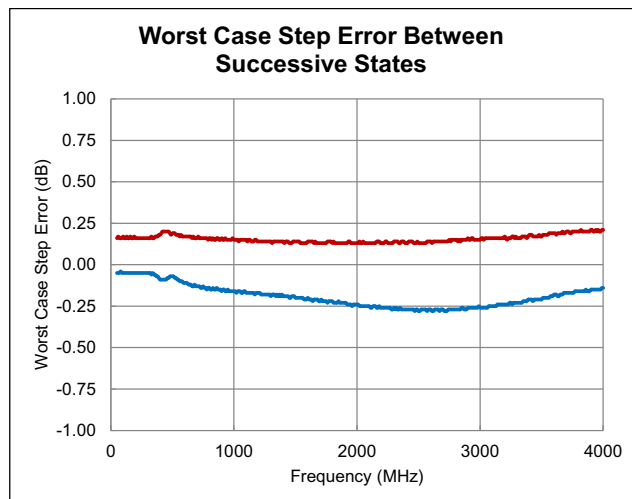
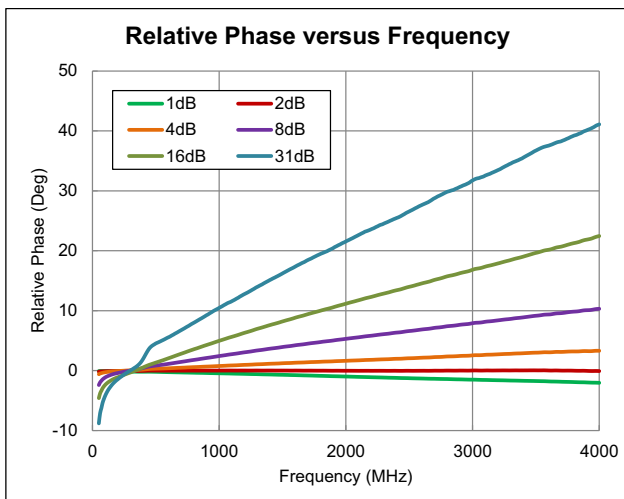
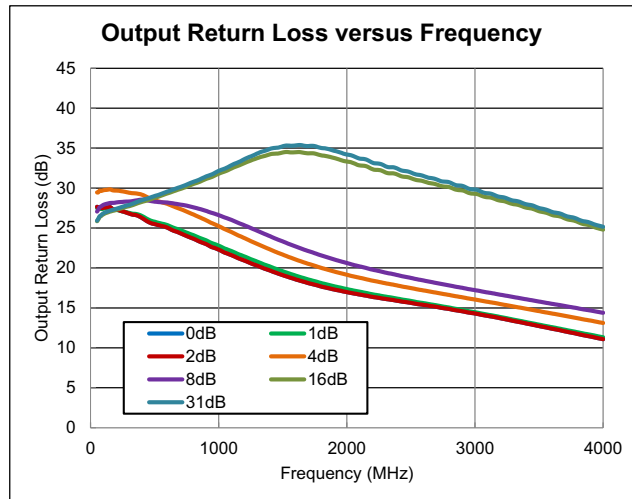
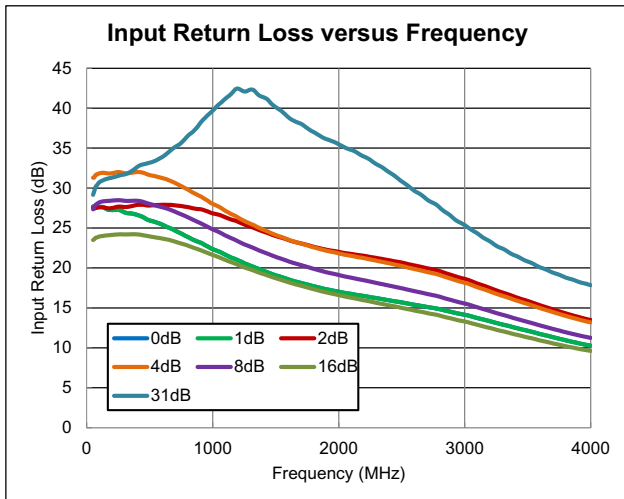
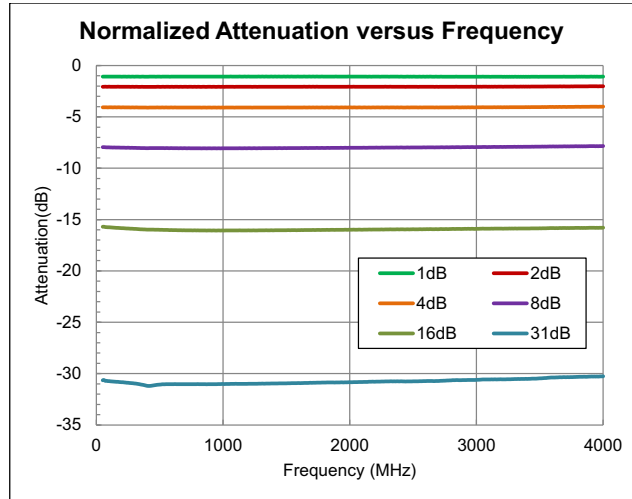
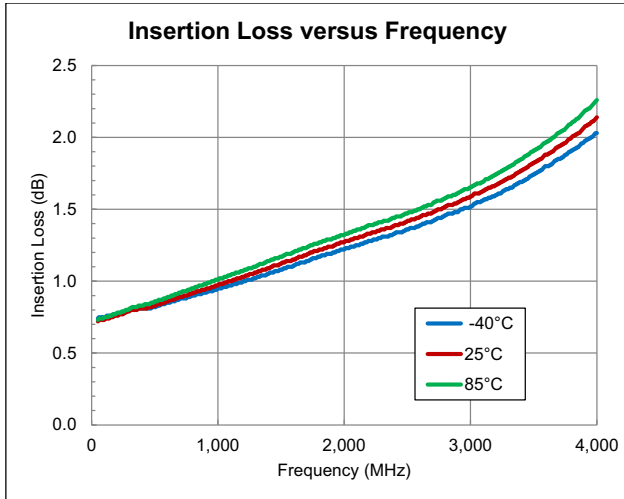
Typical Performance at 5V V_{DD} - Broadband Application Circuit



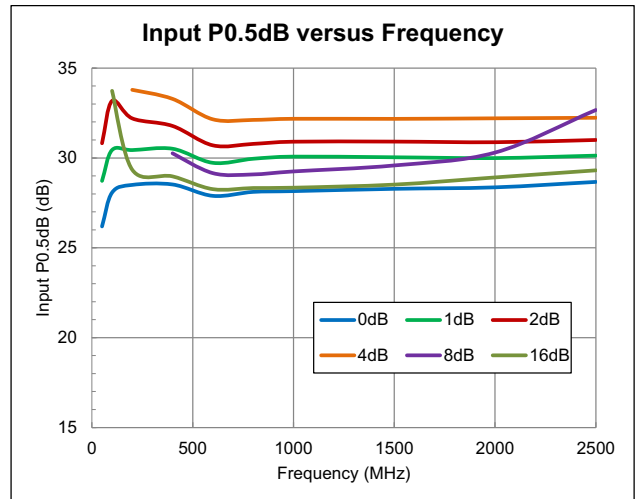
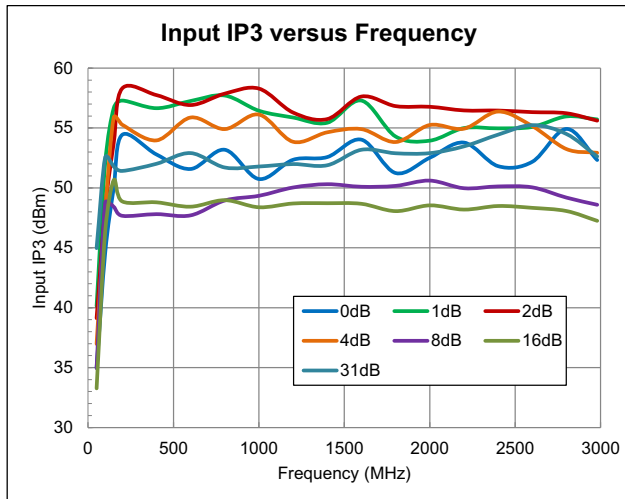
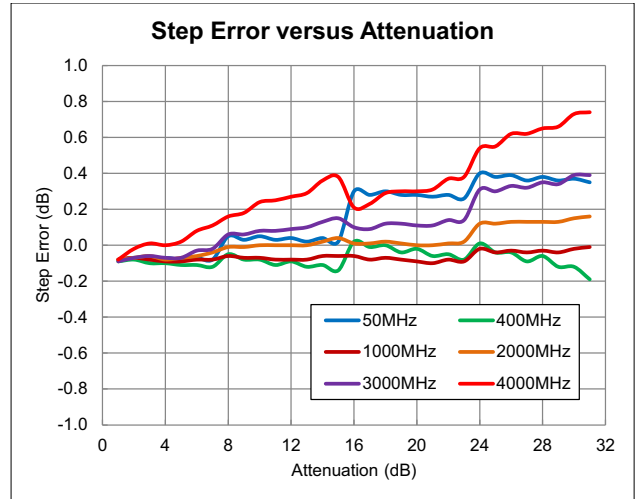
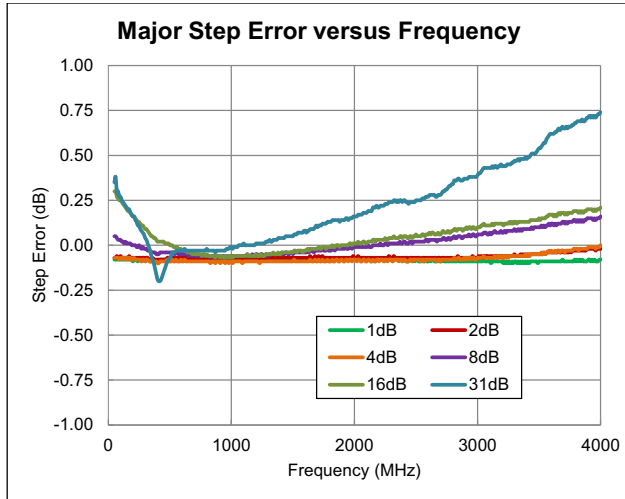
Typical Performance at 5V V_{DD} - Broadband Application Circuit



Typical Performance at 3V V_{DD} - Broadband Application Circuit

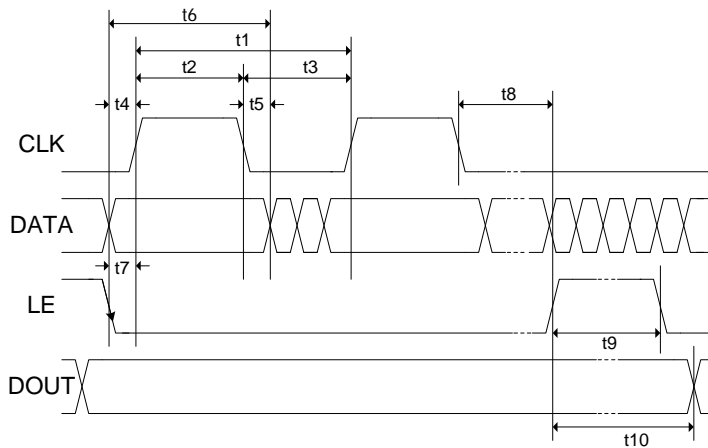


Typical Performance at 3V V_{DD} - Broadband Application Circuit

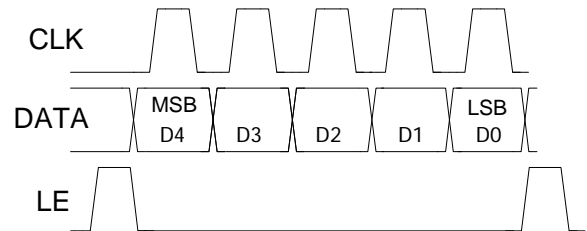


Serial Port Interface

SPI Timing Diagram



Programming Example - 5-Bit



Truth Table

| Control Bits | | | | | Relative Gain Setting |
|--------------|----|----|----|----|-----------------------|
| C16 | C8 | C4 | C2 | C1 | |
| 1 | 1 | 1 | 1 | 1 | Max gain |
| 1 | 1 | 1 | 1 | 0 | -1dB |
| 1 | 1 | 1 | 0 | 1 | -2dB |
| 1 | 1 | 0 | 1 | 1 | -4dB |
| 1 | 0 | 1 | 1 | 1 | -8dB |
| 0 | 1 | 1 | 1 | 1 | -16dB |
| 0 | 0 | 0 | 0 | 0 | -31dB |

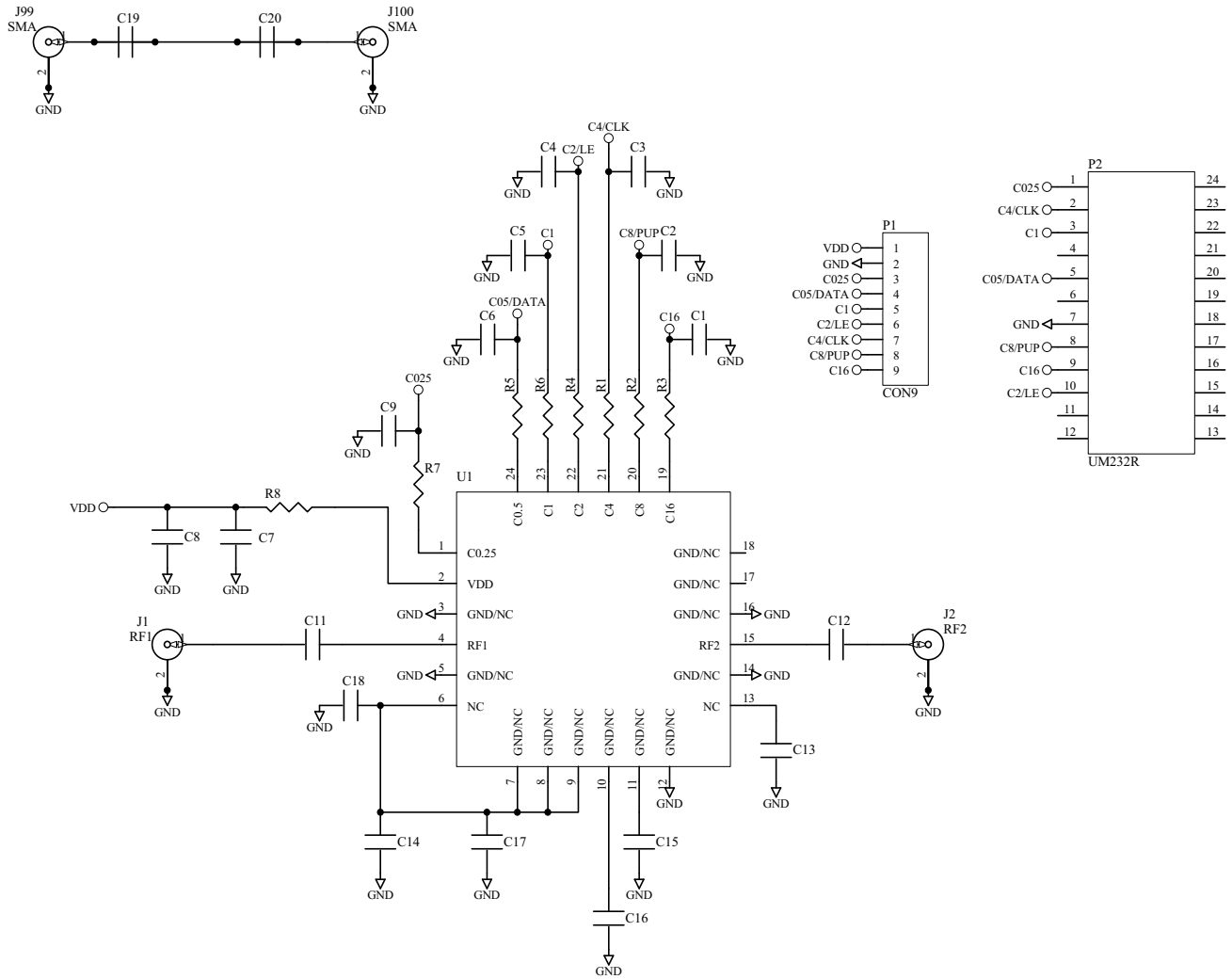
SPI Timing Diagram Specifications

| Parameter | Limit | Unit | Comment |
|-----------|-------|---------|------------------------|
| t_1 | 25 | MHz max | CLK Frequency |
| t_2 | 20 | ns min | CLK High |
| t_3 | 20 | ns min | CLK Low |
| t_4 | 5 | ns min | DATA to CLK Setup Time |
| t_5 | 5 | ns min | DATA to CLK Hold Time |
| t_6 | 30 | ns min | Data Valid |
| t_7 | 5 | ns min | LE to CLK Setup Time |
| t_8 | 5 | ns min | CLK to LE Setup Time |
| t_9 | 10 | ns min | LE Pulse Width |
| t_{10} | 20 | ns max | Output Set |

| Logic Voltage Levels | |
|----------------------|--------------|
| State | Logic |
| Low | 0V to 0.8V |
| High | 2.0V to 5.0V |

| Power-up Programming Truth Table | |
|----------------------------------|--------------------------|
| PUP | Attenuator Setting |
| Low | Attenuation at max, 31dB |
| High | Attenuation at min, 0dB |

Evaluation Board Schematic

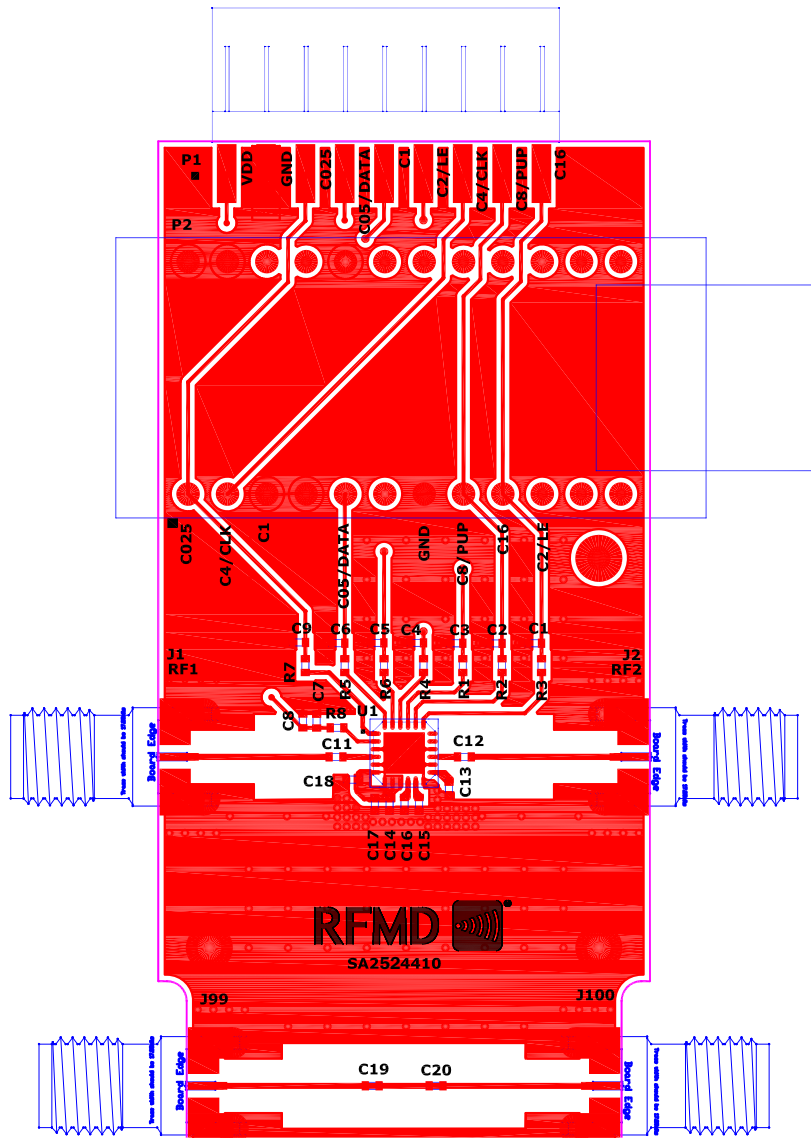


Evaluation Board Bill of Materials (BOM)

| Description | Reference Designator | Manufacturer | Manufacturer's P/N |
|---|-----------------------|---------------------------------|--------------------|
| RFSA2714 Evaluation Board | PCB Itself | Dynamic Details (DDI) Toronto | SA2714410(A) |
| 50MHz to 4000MHz, Serial 5-Bit DSA 1dB Step | U1 | RFMD | RFSA2524SB |
| CAP, 10000pF, 10%, 25V, X7R, 0402 | C11-C12 | Murata Electronics | GRM155R71E103KA01D |
| CAP, 1000pF, 10%, 50V, X7R, 0402 | C7 | Taiyo Yuden (USA), Inc. | RM UMK105BJ102KV-F |
| RES, 0Ω, 0402 | R1-R2, R4-R5, R8 | Kamaya, Inc | RMC1/16SJPTH |
| CONN, SMA, END LNCH, UNIV, HYB MNT, FLT | J1-J2, J99-J100 | Molex | SD-73251-4000 |
| CONN, HDR, ST, PLRZD, 9-PIN | P1 | ITW Pancon | MPSS100-9-C |
| CONN, SKT, 24-PIN DIP, .600", T/H | P2 | Aries Electronics Inc. | 24-6518-10 |
| MOD, USB TO SERIAL UART, SSOP-28 | M1 (See Note Below) | Future Technology Devices Int'l | UM232R |
| DNP | C1-C6, C8-C9, C13-C20 | NA | NA |
| DNP | R3, R6- R7 | NA | NA |

Note: M1 is to be mounted into P2 with respect to the Pin 1 alignment of M1 and P2

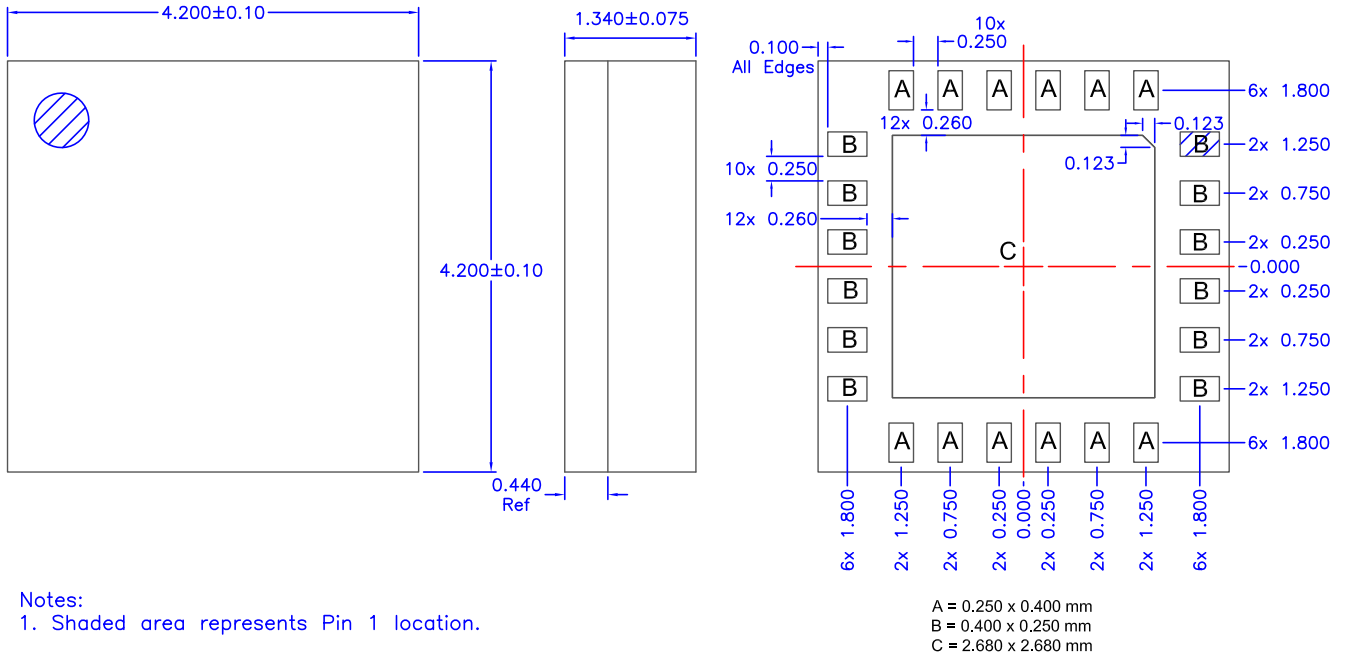
Evaluation Board Assembly Drawing



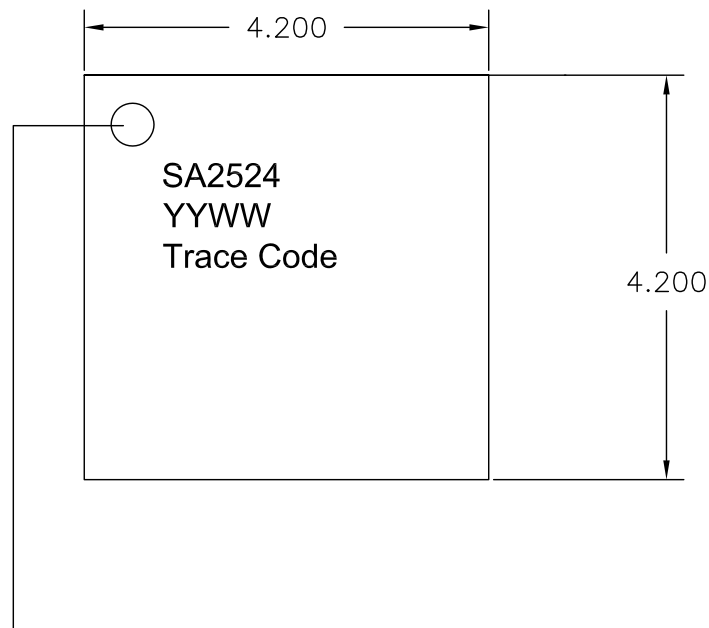
Pin Names and Descriptions

| Pin | Name | Description |
|------|------|--|
| 1 | GND | Connect to Low Inductance Path to Ground |
| 2 | VDD | Power Supply |
| 3 | GND | Connect to Low Inductance Path to Ground |
| 4 | RF1 | RF port. External DC block required |
| 5 | GND | Connect to Low Inductance Path to Ground |
| 6 | GND | Connect to Low Inductance Path to Ground |
| 7 | GND | Connect to Low Inductance Path to Ground |
| 8 | GND | Connect to Low Inductance Path to Ground |
| 9 | GND | Connect to Low Inductance Path to Ground |
| 10 | GND | Connect to Low Inductance Path to Ground |
| 11 | GND | Connect to Low Inductance Path to Ground |
| 12 | GND | Connect to Low Inductance Path to Ground |
| 13 | GND | Connect to Low Inductance Path to Ground |
| 14 | GND | Connect to Low Inductance Path to Ground |
| 15 | RF2 | RF port. External DC block required. |
| 16 | GND | Connect to Low Inductance Path to Ground |
| 17 | GND | Connect to Low Inductance Path to Ground |
| 18 | GND | Connect to Low Inductance Path to Ground |
| 19 | NC | No internal connection. EVB can be ground or no connect |
| 20 | PUP | Power-up Programming pin Low = max attenuation (31dB) at power-up High = min attenuation (0dB) at power-up |
| 21 | CLK | Serial Clock |
| 22 | LE | Latch Enable |
| 23 | NC | No internal connection; EVB can be ground or no connect |
| 24 | DATA | Serial Data |
| EPAD | GND | DC and RF Ground; Must be soldered to EVB ground plane over a bed of vias for thermal and RF performance. |

Package Drawing



Branding Diagram



Pin 1 Indicator
YY = Year
WW = Week